

Kuwait | August 12, 2021

On Thursday, Boursa Kuwait ended the week on a mixed note, as two out of four major indices ended in the green while the other two ended lower. Premier Market Index advanced 0.14% to close at 7,208.23 points, and All-Share Index edged up by 0.01% to close at 6,612.65 points. On the contrary, Main Market Index declined 0.38% to end at 5,442.06 points, and BK Main 50 Index dropped 0.32% to settle at 5,743.10 points.

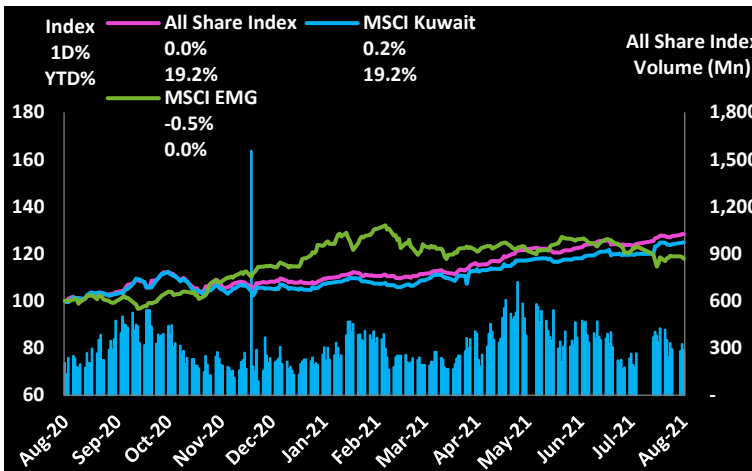
In the Premier Market Index, KRE was the top percentage gainer with a gain of 2.27%, followed by AGLTY with an increase of 1.00%. On the other hand, ALQURAIN was the top percentage loser with a loss of 1.92%, followed by ALIMTIAZ with a decline of 1.63%. The total value traded in the Premier Market Index was KWD 24.4 mln, and the volume was 74 mln shares. In the Main Market Index, NRE, which rose 0.44%, witnessed the highest traded value of KWD 7.4 mln as well as the highest volume of 32.5 mln shares. SECH, which dropped 8.77%, recorded the second-highest traded value of KWD 3.4 mln and the second-highest volume in the index of 31.7 mln shares.

Economic / Company News

- [UPAC - Financial Results for 2Q21](#)
- [JAZEERA - Financial Results for 2Q21](#)
- [SECH - Financial Results for 2Q21](#)
- [MASAKEN - Financial Results for 2Q21](#)
- [KFH - Transcript of Analysts Conference](#)
- [AUB - Transcript of Analysts Conference](#)
- [KIB - Transcript of Analysts Conference](#)
- [WARBABANK - Analyst Conference](#)
- [MABANEE - Analysts Conference](#)
- [NIND - Transcript of Analysts Conference](#)
- [ALQURAIN - Transcript of Conference](#)

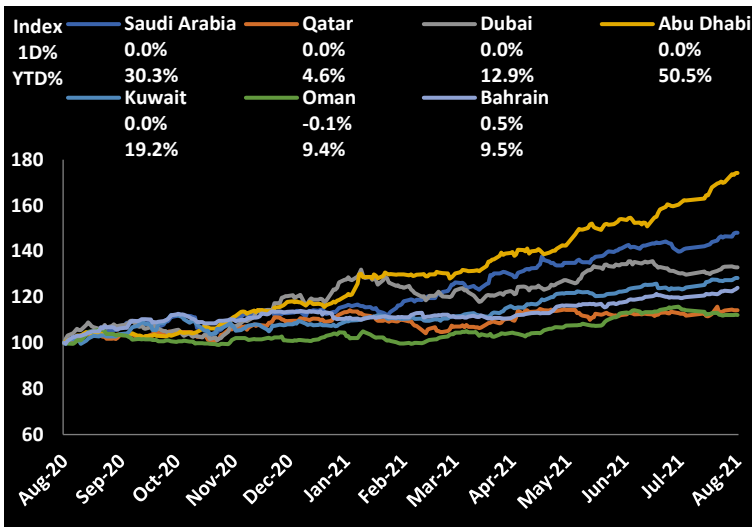
Source: Boursa Kuwait

All Share Index (1-Year Performance)



Value Traded: 49.90 mln | Compared to 1Y Daily Avg: -7.4%

GCC Bourses



Source: Publicly available market data

Major Global Indices

Indices	Last Price	1D%	WTD%	MTD%	YTD%
DJ Industrial	35,499.85	0.0	0.8	1.6	16.0
S&P 500	4,460.83	0.3	0.5	1.5	18.8
Nikkei225	28,015.02	-0.2	0.7	2.7	2.1
Hang Seng	26,517.82	-0.5	1.3	2.1	-2.6
FTSE 100	7,193.23	-0.4	1.0	2.3	11.3
CAC 40	6,882.47	0.4	1.0	4.1	24.0
MSCI World	3,115.74	0.2	0.6	1.5	15.8
MSCI Emg	1,290.91	-0.5	-0.1	1.0	0.0

Source: Publicly available market data

Major Commodities / Currencies

	Last Price	1D%	WTD%	MTD%	YTD%
Gold (\$/MT Ounce)	1,751.80	-0.1	-0.6	-3.6	-7.7
Silver (\$/Troy Ounce)	23.12	-1.6	-5.0	-9.5	-12.7
Brent Crude Oil (\$/BBL)	71.31	-0.2	0.9	-6.6	37.4
OPEC Oil (\$/BBL)	70.52	0.6	-1.1	-5.2	38.9
EUR/USD	0.852	0.1	0.3	1.2	4.6
USD Index	92.98	0.1	0.2	0.9	3.3
JPY	110.40	0.0	0.2	0.6	6.9

Source: Publicly available market data

Market Calendar

Date	Day	Company Name	Event
14-Aug	Saturday	BAYANINV	BoD Meeting
14-Aug	Saturday	AGHC	BoD Meeting
14-Aug	Saturday	MIDAN	BoD Meeting
14-Aug	Saturday	ARABREC	BoD Meeting
15-Aug	Sunday	YIACO	BoD Meeting
15-Aug	Sunday	AJWAN	BoD Meeting

Source: Boursa Kuwait

Daily Top Gainers

Stock (Fils)	Last Price	52 Week High	Low	1D%	YTD%	Value (KD'000)
KHOT	83.7	111.0	50.1	26.2	39.5	0.4
QIC	75.0	96.0	62.5	14.3	0.0	6.5
TAMINV	269.0	371.0	200.0	8.9	-13.2	51.2
ARABREC	39.1	42.0	21.3	4.6	50.4	96.5
HCC	95.0	126.0	65.0	3.8	4.4	1.0

Daily Top Losers

Stock (Fils)	Last Price	52 Week High	Low	1D%	YTD%	Value (KD'000)
SECH	104.0	115.0	45.6	-8.8	141.9	3,420.0
KINS	422.0	444.0	339.0	-5.0	9.6	19.9
MASAKEN	34.7	44.5	20.9	-4.9	38.8	16.8
ENERGYH	37.0	46.5	17.6	-4.9	32.1	5.8
GPI	22.3	28.4	17.0	-4.7	17.4	133.3

Daily Volume Leaders

Stock (Fils)	Last Price	1D%	YTD%	Volume ('000)
NRE	227.0	0.4	202.7	32,465
SECH	104.0	-8.8	141.9	31,718
MAZAYA	90.1	-0.3	58.1	18,938
KRE	135.0	2.3	23.9	17,352
AUB	259.0	0.8	14.1	14,644

Daily Value Leaders

Stock (Fils)	Last Price	1D%	YTD%	Value (KD'000)
NRE	227.0	0.4	202.7	7,450
AGLTY	1,006.0	1.0	48.8	4,348
AUB	259.0	0.8	14.1	3,775
SECH	104.0	-8.8	141.9	3,420
GBK	237.0	0.4	8.2	2,926

Source: Boursa Kuwait (for all tables and charts on page 2)

Stocks Trading Near 52 Weeks High

Stock (Fils)	Last Price	52 W High	% Below 52 W High	Value (KD'000)
AUB	259.0	259.0	0.0	3,775.1
NBK	891.0	898.0	-0.8	1,139.1
ALMUTAHED	302.0	305.0	-1.0	13.0
KFH	787.0	795.0	-1.0	2,923.5
PAPER	193.0	195.0	-1.0	41.3

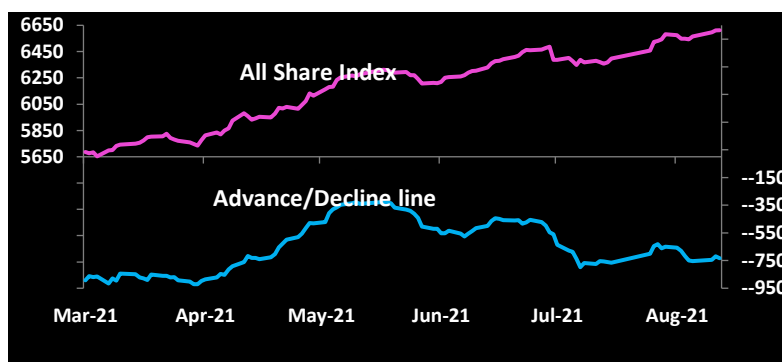
Stocks Trading Near 52 Weeks Low

Stock (Fils)	Last Price	52 W Low	% Above 52 W Low	Value (KD'000)
AZNOULA	226.0	220.0	2.7	171.1
NAPESCO	845.0	818.0	3.3	32.3
RKWC	63.8	61.0	4.6	9.0
ZAIN	591.0	565.0	4.6	757.5
KPROJ	154.0	147.0	4.8	181.3

New High / Low

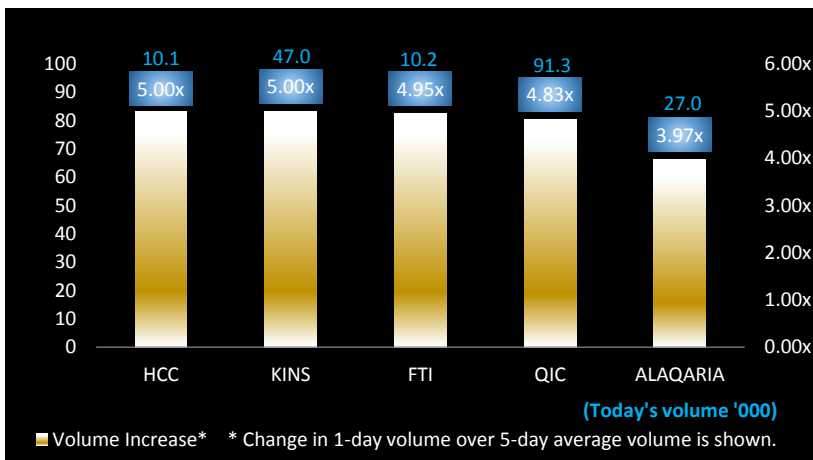
1D	1W
3	8
1	3

Market Breadth



Advancing Volume	162.2 Mln	Advancing Shares	44
Declining Volume	119.7 Mln	Declining Shares	77
Unchanged Volume	6.6 Mln	Unchanged Shares	19

Volume Trending Stocks

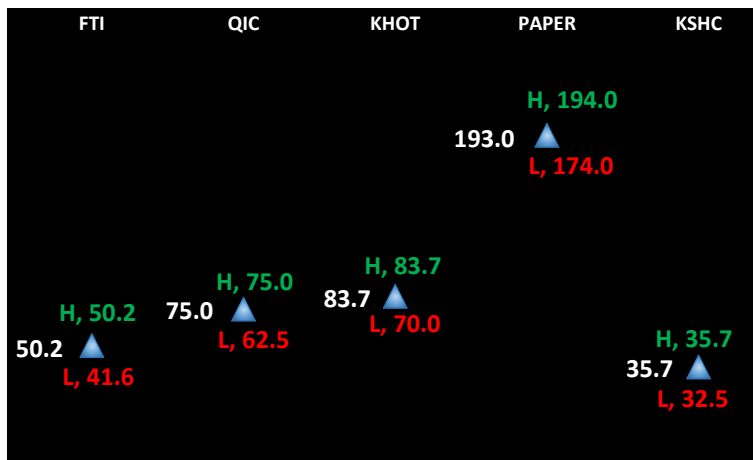


Sectoral Valuation Multiplies

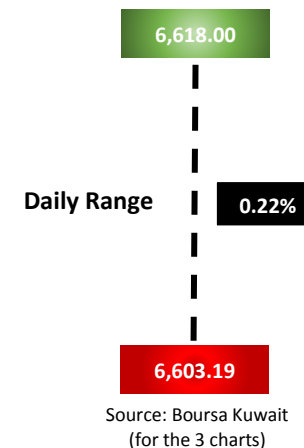
Sector/Indices	Market Cap (KD Mln)	Weight (%)	P/E (TTM)*#	P/BV (TTM)*
All Share Index	38,804.16	100.00%	23.3x	1.7x
Premier Market	29,427.41	75.84%	26.1x	2.1x
Main Market	9,376.75	24.16%	15.0x	1.0x
BANKS	22,267.71	57.38%	31.1x	2.2x
FINANCIAL SERVICES	3,554.75	9.16%	9.4x	1.1x
REAL ESTATE	2,580.72	6.65%	34.7x	1.0x
INSURANCE	507.01	1.31%	9.8x	1.0x
INDUSTRIALS	4,135.13	10.66%	24.0x	1.3x
BASIC MATERIALS	940.32	2.42%	25.6x	1.4x
CONSUMER STAPLES	227.99	0.59%	16.8x	1.5x
TELECOMMUNICATIONS	3,323.36	8.56%	15.1x	1.8x
ENERGY	290.63	0.75%	17.4x	1.1x
TECHNOLOGY	10.01	0.03%	24.4x	0.9x
HEALTH CARE	164.36	0.42%	35.4x	2.6x
CONSUMER DISCRETIONARY	553.56	1.43%	19.6x	1.6x
UTILITIES	248.60	0.64%	20.2x	3.6x

Source : Boursa Kuwait and KIC Research *Based on data as on TTM 31.3.2021 # Market cap weighted, excluding companies with negative earnings

Stocks with Highest Daily Price Range (Fils)



All Share Index



Sectoral Performance

Sectoral Indices	Last Price	1D%	WTD%	MTD%	YTD%	Advances / Declines Ratio	Volume Traded / 5-day Avg Vol
All Share Index	6,612.65	0.0	0.7	0.5	19.2	0.57	0.95
Premier Market	7,208.23	0.1	0.8	0.6	19.1	0.77	1.01
Main Market	5,442.06	-0.4	0.5	0.1	19.5	0.53	0.93
BANKS	1,507.11	0.2	0.9	0.4	19.4	1.67	0.80
FINANCIAL SERVICES	1,248.30	-0.5	0.4	2.6	34.3	0.40	0.87
REAL ESTATE	1,226.70	-0.3	1.2	1.4	28.8	0.56	1.08
INSURANCE	1,412.05	-1.1	1.3	0.5	22.1	0.00	0.43
INDUSTRIALS	1,163.69	0.3	1.1	0.4	30.6	0.75	1.16
BASIC MATERIALS	1,054.94	-0.6	-1.2	-2.1	17.4	1.00	1.12
CONSUMER STAPLES	748.21	-1.1	-2.1	-3.0	-8.6	0.00	1.33
TELECOMMUNICATIONS	1,083.87	0.1	0.3	-0.6	-1.6	3.00	0.57
ENERGY	1,394.49	-0.9	-1.4	-1.5	9.2	0.67	2.28
TECHNOLOGY	728.23	-1.9	-1.9	-3.7	44.9	0.00	0.00
HEALTH CARE	807.12	-1.0	-1.1	0.8	-2.4	0.00	0.02
CONSUMER DISCRETIONARY	1,026.03	-0.1	0.1	-0.9	37.5	0.67	1.13
UTILITIES	594.74	-0.4	0.0	-0.4	-18.4	0.00	0.81

Source : Boursa Kuwait

Kuwait Investment Co. (K.S.C.P)

5th Floor, Souk Al-Manakh, Mubarak Al-Kabir Street, Sharq, Kuwait

P.O. Box 1005, Safat 13011, Kuwait

Tel: (+965) 1888852 (+965) 22967000

Email: research@kic.com.kw

Websites: www.kic.com.kw / www.kictrade.com



Disclaimer:

This document and material contained herewith have been produced, compiled, and issued by Kuwait Investment Company- KIC (K.S.C.P.). Kuwait Investment Company is a public shareholding company, incorporated and domiciled in the State of Kuwait, and is regulated by the Central Bank of Kuwait (CBK) and Capital Markets Authority (CMA) as an investment and finance company. The Company has obtained the information used in this document from sources it believes to be reliable, but the issuer does not guarantee, neither its accuracy nor completeness, nor provides an independent verification of the material contained therein. KIC may, from time to time to the extent permitted by law, participate or invest in other financing transactions with the issuers of the securities, perform services for or solicit business from such issuer and/or have a position or effect transactions in the securities or options thereof. KIC may, to extent permitted by the applicable Kuwaiti Law or other applicable laws and regulations, effect transactions in the securities before this material is published to recipients. The opinions and estimates expressed herein are those of the issuer and subject to change at any time without any prior notice. Accordingly, no representation or warranty, expressed or implied, is made as to and no reliance should be placed on the fairness, accuracy, completeness or correctness of the information and opinions contained in this document. KIC accepts no liability for any loss arising from the use of this document or its contents or otherwise arising in connection therewith. This document should not be relied upon or used in substitution for the exercise of sound judgment. KIC shall have no responsibility or liability whatsoever in respect of any inaccuracy in or omission from this or any other document prepared by KIC for, or sent by KIC to any entity, and any such entity shall be responsible for conducting its own scrutiny, investigation, and analysis of the information contained or referred to in this document and of evaluating the merits and risks involved in the securities forming the subject matter of this or other such document.

Opinions and estimates constitute KIC's judgment and are subject to change without prior notice. Past performance is not a reliable indicator of future results. This document does not constitute an offer or invitation to subscribe for or purchase any securities, and neither this document nor anything contained herein shall form the basis of any contract or commitment whatsoever. This document is not an offer to sell or a solicitation to buy any securities. It is being furnished to the reader solely for his/her information and may not be redistributed inside Kuwait or by any jurisdiction outside Kuwait where this action is restricted by law. Entities who receive this report should make themselves aware of and adhere to any such restrictions. By accepting receipt of this report, the reader agrees to be bound by the foregoing limitations.