

Kuwait | August 15, 2021

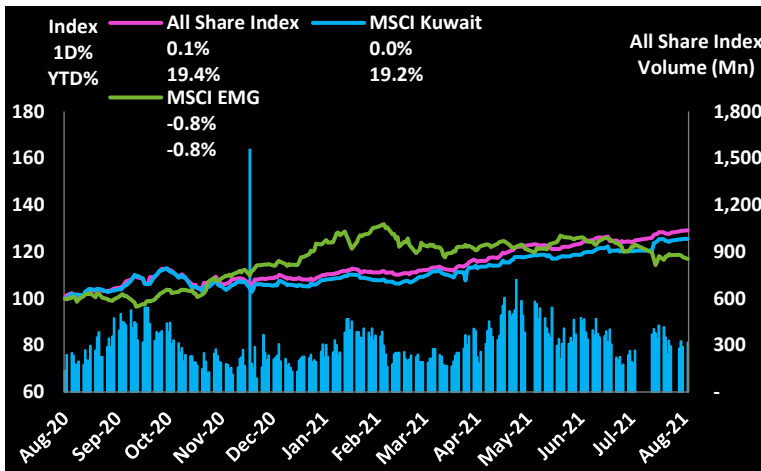
On Sunday, Boursa Kuwait started the week on a positive note, as three out of four major indices ended in the green. Premier Market Index advanced 0.16% to close at 7,219.60 points, All-Share Index increased 0.13% and closed at 6,621.48 points, and Main Market Index rose 0.06% to end at 5,445.23 points. On the contrary, BK Main 50 Index declined 0.30% to settle at 5,725.74 points. In the Premier Market Index, AUB was the top percentage gainer with a gain of 2.70%, followed by BPCC with an increase of 0.71%. On the other hand, KRE was the top percentage loser with a loss of 1.48%, followed by ALAFCO with a decline of 1.35%. The total value traded in the Premier Market Index was KWD 27.1 mln, and the volume was 84.1 mln shares. In the Main Market Index, NRE, which fell 3.08%, witnessed the highest traded value of KWD 6 mln and the second-highest traded volume of 26.5 mln shares. MAZAYA, which rose 1.33%, recorded the second-highest traded value of KWD 2.5 mln and the highest volume in the index of 28 mln shares.

Economic / Company News

- [AGLTY - Financial Results for 2Q21](#)
- [ALAFCO - Financial Results for 3Q21](#)
- [NRE - Financial Results for 2Q21](#)
- [CBK - Financial Results for 2Q21](#)
- [KPROJ - Transcript of the Conference](#)
- [INTEGRATED - Transcript of the Conference](#)
- [CABLE - Transcript of the Conference](#)
- [MEZZAN - Transcript of the Conference](#)
- [WARBABANK - Transcript of the Conference](#)
- [AZNOULA - Transcript of the Conference](#)
- [NINV - Transcript of the Conference](#)

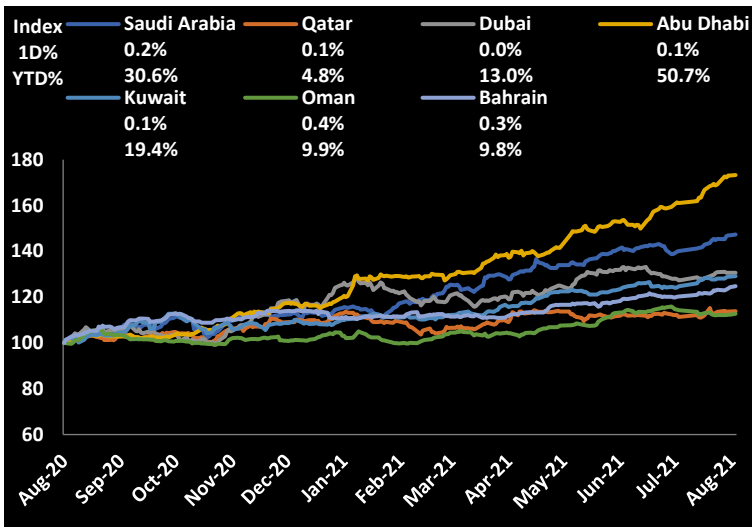
Source: Boursa Kuwait

All Share Index (1-Year Performance)



Value Traded: 52.60 mln | Compared to 1Y Daily Avg: -2.4%

GCC Bourses



Source: Publicly available market data

Major Global Indices

Indices	Last Price	1D%	WTD%	MTD%	YTD%
DJ Industrial	35,515.38	0.0	0.9	1.7	16.0
S&P 500	4,468.00	0.2	0.7	1.7	19.0
Nikkei225	27,977.15	-0.1	0.6	2.5	1.9
Hang Seng	26,391.62	-0.5	0.8	1.7	-3.1
FTSE 100	7,218.71	0.4	1.3	2.7	11.7
CAC 40	6,896.04	0.2	1.2	4.3	24.2
MSCI World	3,125.12	0.3	0.9	1.8	16.2
MSCI Emg	1,280.86	-0.8	-0.9	0.2	-0.8

Source: Publicly available market data

Data as on 13/8

Major Commodities / Currencies

	Last Price	1D%	WTD%	MTD%	YTD%
Gold (\$/MT Ounce)	1,778.20	1.5	0.9	-2.1	-6.3
Silver (\$/Troy Ounce)	23.78	2.9	-2.2	-6.9	-10.2
Brent Crude Oil (\$/BBL)	70.59	-1.0	-0.2	-7.5	36.0
OPEC Oil (\$/BBL)	71.32	1.1	0.0	-4.2	40.4
EUR/USD	0.848	-0.5	-0.3	0.7	4.1
USD Index	92.51	-0.5	-0.3	0.4	2.8
JPY	109.57	-0.7	-0.6	-0.1	6.1

Source: Publicly available market data

Data as on 13/8

Market Calendar

Date	Day	Company Name	Event
16-Aug	Monday	MASSALEH	BoD Meeting
16-Aug	Monday	TAAMEER	BoD Meeting
25-Aug	Wednesday	ABAR	AGM
29-Aug	Sunday	ALMAL	AGM

Source: Boursa Kuwait

Daily Top Gainers

Stock (Fils)	Last Price	52 Week High	Low	1D%	YTD%	Value (KD'000)
ENERGYH	41.0	46.5	17.6	10.8	46.4	43.1
EKHOLDING	355.0	364.0	288.0	8.9	0.0	0.1
ASC	108.0	122.0	55.6	7.9	56.5	0.0
INJAZZAT	81.2	86.9	66.6	6.1	8.3	826.4
KINS	444.0	450.0	339.0	5.2	15.3	95.7

Daily Top Losers

Stock (Fils)	Last Price	52 Week High	Low	1D%	YTD%	Value (KD'000)
KHOT	72.0	111.0	50.1	-14.0	20.0	1.1
FTI	45.2	57.9	29.0	-10.0	22.2	0.0
KMEFIC	161.0	198.0	120.0	-9.0	32.0	0.9
ACICO	115.0	136.0	82.0	-6.5	27.8	443.9
NAPESCO	800.0	1,170.0	764.0	-5.3	-23.7	24.5

Daily Volume Leaders

Stock (Fils)	Last Price	1D%	YTD%	Volume ('000)
AUB	266.0	2.7	17.2	43,903
MAZAYA	91.3	1.3	60.2	27,977
NRE	220.0	-3.1	193.3	26,550
GFH	73.5	0.6	53.1	22,475
SECH	100.0	-3.9	132.6	22,249

Daily Value Leaders

Stock (Fils)	Last Price	1D%	YTD%	Value (KD'000)
AUB	266.0	2.7	17.2	11,591
NRE	220.0	-3.1	193.3	5,982
AGLTY	1,005.0	-0.1	48.7	3,902
MAZAYA	91.3	1.3	60.2	2,539
KFH	788.0	0.1	16.4	2,475

Source: Boursa Kuwait (for all tables and charts on page 2)

Stocks Trading Near 52 Weeks High

Stock (Fils)	Last Price	52 W High	% Below 52 W High	Value (KD'000)
ALMUTAHED	305.0	305.0	0.0	184.5
AUB	266.0	267.0	-0.4	11,591.4
KFH	788.0	795.0	-0.9	2,475.3
NBK	890.0	898.0	-0.9	991.0
FCEM	44.9	45.5	-1.3	3.5

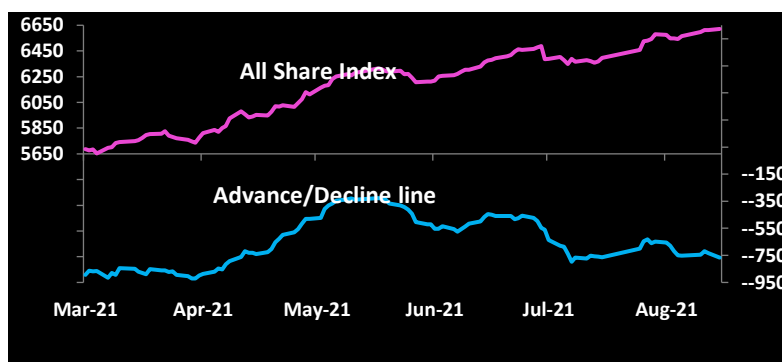
Stocks Trading Near 52 Weeks Low

Stock (Fils)	Last Price	52 W Low	% Above 52 W Low	Value (KD'000)
AZNOULA	224.0	220.0	1.8	124.8
KPROJ	153.0	147.0	4.1	112.6
ZAIN	590.0	566.0	4.2	334.7
STC	860.0	822.0	4.6	12.4
CATTL	179.0	171.0	4.7	52.5

New High / Low

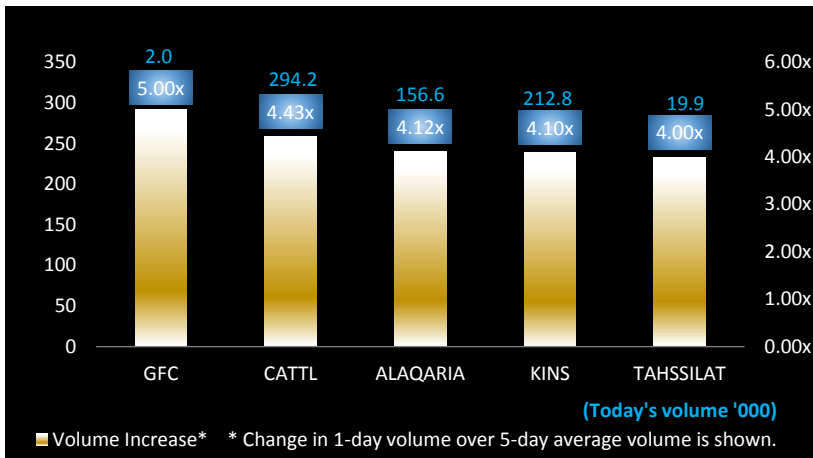
1D	1W
4	4
1	1

Market Breadth



Advancing Volume	156.8 Mln	Advancing Shares	50
Declining Volume	151.9 Mln	Declining Shares	77
Unchanged Volume	8.1 Mln	Unchanged Shares	12

Volume Trending Stocks

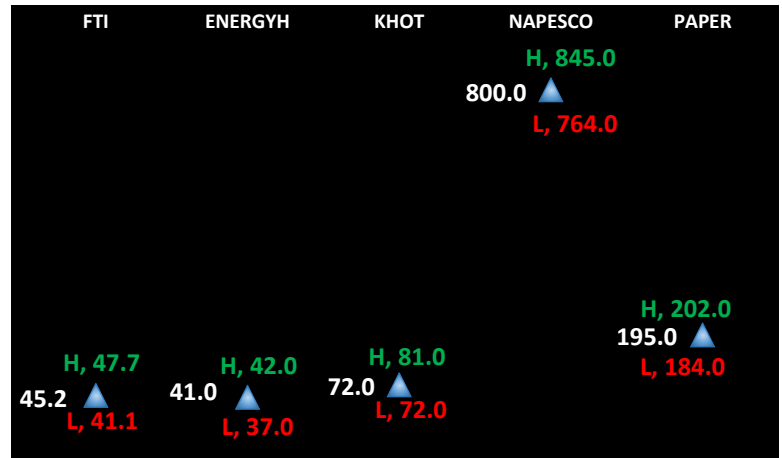


Sectoral Valuation Multiplies

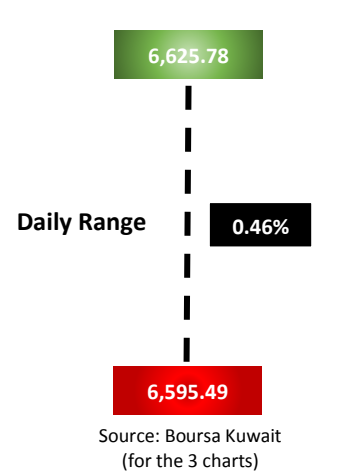
Sector/Indices	Market Cap (KD Mln)	Weight (%)	P/E (TTM)*#	P/BV (TTM)*
All Share Index	38,851.64	100.00%	23.3x	1.7x
Premier Market	29,473.61	75.86%	26.2x	2.1x
Main Market	9,378.03	24.14%	15.0x	1.0x
BANKS	22,345.29	57.51%	31.3x	2.2x
FINANCIAL SERVICES	3,564.07	9.17%	9.4x	1.1x
REAL ESTATE	2,566.15	6.60%	34.4x	1.0x
INSURANCE	507.96	1.31%	9.9x	1.0x
INDUSTRIALS	4,119.60	10.60%	24.0x	1.3x
BASIC MATERIALS	945.58	2.43%	25.7x	1.4x
CONSUMER STAPLES	226.50	0.58%	16.7x	1.5x
TELECOMMUNICATIONS	3,317.09	8.54%	15.1x	1.8x
ENERGY	287.68	0.74%	17.3x	1.1x
TECHNOLOGY	10.80	0.03%	24.9x	0.9x
HEALTH CARE	167.36	0.43%	36.0x	2.6x
CONSUMER DISCRETIONARY	547.16	1.41%	19.7x	1.6x
UTILITIES	246.40	0.63%	20.0x	3.5x

Source : Boursa Kuwait and KIC Research *Based on data as on TTM 31.3.2021 # Market cap weighted, excluding companies with negative earnings

Stocks with Highest Daily Price Range (Fils)



All Share Index



Sectoral Performance

Sectoral Indices	Last Price	1D%	WTD%	MTD%	YTD%	Advances / Declines Ratio	Volume Traded / 5-day Avg Vol
All Share Index	6,621.48	0.1	0.1	0.6	19.4	0.65	1.05
Premier Market	7,219.60	0.2	0.2	0.8	19.3	0.50	1.14
Main Market	5,445.23	0.1	0.1	0.1	19.6	0.68	1.02
BANKS	1,512.34	0.3	0.3	0.8	19.8	1.67	1.19
FINANCIAL SERVICES	1,252.48	0.3	0.3	2.9	34.7	0.48	0.98
REAL ESTATE	1,219.82	-0.6	-0.6	0.9	28.0	0.82	1.09
INSURANCE	1,414.62	0.2	0.2	0.7	22.4	1.00	0.58
INDUSTRIALS	1,160.04	-0.3	-0.3	0.0	30.2	0.40	1.23
BASIC MATERIALS	1,060.83	0.6	0.6	-1.5	18.1	2.00	0.45
CONSUMER STAPLES	743.37	-0.6	-0.6	-3.6	-9.2	0.00	1.70
TELECOMMUNICATIONS	1,081.82	-0.2	-0.2	-0.7	-1.8	0.50	0.62
ENERGY	1,380.82	-1.0	-1.0	-2.5	8.1	0.67	1.15
TECHNOLOGY	785.70	7.9	7.9	3.8	56.3	N/M	0.01
HEALTH CARE	813.17	0.7	0.7	1.5	-1.6	N/M	0.00
CONSUMER DISCRETIONARY	1,012.25	-1.3	-1.3	-2.2	35.6	0.60	1.04
UTILITIES	589.47	-0.9	-0.9	-1.3	-19.1	0.00	0.66

Source : Boursa Kuwait

Kuwait Investment Co. (K.S.C.P)

5th Floor, Souk Al-Manakh, Mubarak Al-Kabir Street, Sharq, Kuwait

P.O. Box 1005, Safat 13011, Kuwait

Tel: (+965) 1888852 (+965) 22967000

Email: research@kic.com.kw

Websites: www.kic.com.kw / www.kictrade.com



Disclaimer:

This document and material contained herewith have been produced, compiled, and issued by Kuwait Investment Company- KIC (K.S.C.P.). Kuwait Investment Company is a public shareholding company, incorporated and domiciled in the State of Kuwait, and is regulated by the Central Bank of Kuwait (CBK) and Capital Markets Authority (CMA) as an investment and finance company. The Company has obtained the information used in this document from sources it believes to be reliable, but the issuer does not guarantee, neither its accuracy nor completeness, nor provides an independent verification of the material contained therein. KIC may, from time to time to the extent permitted by law, participate or invest in other financing transactions with the issuers of the securities, perform services for or solicit business from such issuer and/or have a position or effect transactions in the securities or options thereof. KIC may, to extent permitted by the applicable Kuwaiti Law or other applicable laws and regulations, effect transactions in the securities before this material is published to recipients. The opinions and estimates expressed herein are those of the issuer and subject to change at any time without any prior notice. Accordingly, no representation or warranty, expressed or implied, is made as to and no reliance should be placed on the fairness, accuracy, completeness or correctness of the information and opinions contained in this document. KIC accepts no liability for any loss arising from the use of this document or its contents or otherwise arising in connection therewith. This document should not be relied upon or used in substitution for the exercise of sound judgment. KIC shall have no responsibility or liability whatsoever in respect of any inaccuracy in or omission from this or any other document prepared by KIC for, or sent by KIC to any entity, and any such entity shall be responsible for conducting its own scrutiny, investigation, and analysis of the information contained or referred to in this document and of evaluating the merits and risks involved in the securities forming the subject matter of this or other such document.

Opinions and estimates constitute KIC's judgment and are subject to change without prior notice. Past performance is not a reliable indicator of future results. This document does not constitute an offer or invitation to subscribe for or purchase any securities, and neither this document nor anything contained herein shall form the basis of any contract or commitment whatsoever. This document is not an offer to sell or a solicitation to buy any securities. It is being furnished to the reader solely for his/her information and may not be redistributed inside Kuwait or by any jurisdiction outside Kuwait where this action is restricted by law. Entities who receive this report should make themselves aware of and adhere to any such restrictions. By accepting receipt of this report, the reader agrees to be bound by the foregoing limitations.