

Kuwait | August 3, 2021

On Tuesday, overall market sentiment was mixed, as three out of four major indices ended in the green, while Premier Market Index slipped 0.04% to close at 7,127.00 points. All-Share Index ended marginally higher by 0.02% and closed at 6,547.82 points, Main Market Index increased 0.14% to end at 5,413.44 points, and BK Main 50 Index rose 0.26% to settle at 5,700.22 points.

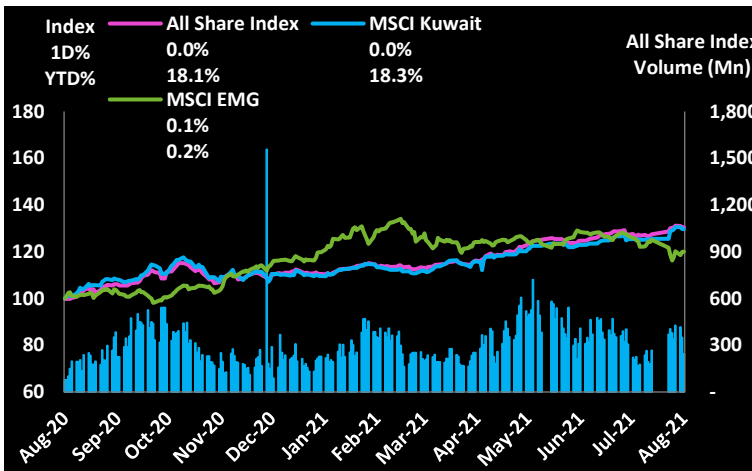
In the Premier Market Index, BOURSA was the top percentage gainer with a gain of 1.76%, as the company reported a 93% YoY increase in net profit in 2Q21. MABANEE was the second-highest gainer with an increase of 1.66%. On the other hand, HUMANSOFT was the top percentage loser with a loss of 2.14%, followed by BPCC with a decline of 2.02%. The total value traded in the Premier Market Index was KWD 30.9 mln, and the volume was 79.3 mln shares. In the Main Market Index, MAZAYA, which declined 0.54%, witnessed the highest traded value of KWD 2.4 mln and the second-highest volume of 25.9 mln shares. NRE, which remained unchanged, recorded the second-highest traded value of KWD 1.9 mln.

Economic / Company News

- [KFH - Financial Results for 2Q21](#)
- [BOURSA - Financial Results for 2Q21](#)
- [CABLE - Financial Results for 2Q21](#)
- [FIRSTDUBAI - Financial Results for 2Q21](#)
- [FUTUREKID - Financial Results for 2Q21](#)
- [GPI - Financial Results for 2Q21](#)
- [NIH - Owns 26% of Eti Tech General Trading Company](#)
- [ALOLA - Completion of the procedures for transferring ownership of a subsidiary co](#)
- [ALEID - Acquisition of a subsidiary](#)

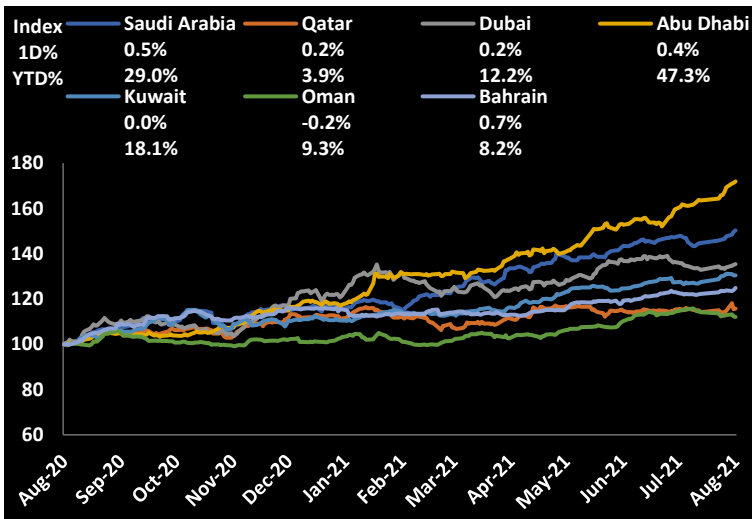
Source: Boursa Kuwait

All Share Index (1-Year Performance)



Value Traded 46.92 mln **Compared to 1Y Daily Avg** -11.8%

GCC Bourses



Source: Publicly available market data

Major Global Indices

Indices	Last Price	1D%	WTD%	MTD%	YTD%
DJ Industrial	35,116.40	0.8	0.5	0.5	14.7
S&P 500	4,423.15	0.8	0.6	0.6	17.8
Nikkei225	27,641.83	-0.5	1.3	1.3	0.7
Hang Seng	26,194.82	-0.2	0.9	0.9	-3.8
FTSE 100	7,105.72	0.3	1.0	1.0	10.0
CAC 40	6,723.81	0.7	1.7	1.7	21.1
MSCI World	3,092.51	0.5	0.8	0.8	15.0
MSCI Emg	1,294.18	0.1	1.3	1.3	0.2

Source : Publicly available market data

Major Commodities / Currencies

	Last Price	1D%	WTD%	MTD%	YTD%
Gold (\$/MT Ounce)	1,814.10	-0.4	-0.2	-0.2	-4.4
Silver (\$/Troy Ounce)	25.58	0.0	0.1	0.1	-3.4
Brent Crude Oil (\$/BBL)	72.41	-0.7	-5.1	-5.1	39.5
OPEC Oil (\$/BBL)	73.89	-1.5	-0.7	-0.7	45.5
EUR/USD	0.843	0.1	0.1	0.1	3.5
USD Index	92.04	0.0	-0.2	-0.2	2.3
JPY	109.02	-0.3	-0.6	-0.6	5.6

Source : Publicly available market data

Market Calendar

Date	Day	Company Name	Event
4-Aug	Wednesday	AUB	BoD Meeting
4-Aug	Wednesday	KPROJ	BoD Meeting
4-Aug	Wednesday	NINV	BoD Meeting
4-Aug	Wednesday	BKIKWT	BoD Meeting
4-Aug	Wednesday	INOVEST	BoD Meeting
4-Aug	Wednesday	GFC	BoD Meeting

Source: Boursa Kuwait

Daily Top Gainers

Stock (Fils)	Last Price	52 Week High	Low	1D%	YTD%	Value (KD'000)
FTI	51.1	57.9	29.0	15.4	38.1	0.0
BAREEQ	40.7	102.0	14.1	14.3	-38.3	1,542.9
MUNSHAAT	52.3	121.0	44.5	9.0	-25.3	12.7
EDU	699.0	900.0	458.0	3.1	113.1	229.0
MANAZEL	44.0	60.0	27.6	2.8	37.5	224.1

Daily Top Losers

Stock (Fils)	Last Price	52 Week High	Low	1D%	YTD%	Value (KD'000)
KSHC	34.0	39.6	24.6	-9.3	6.3	0.0
QIC	68.9	96.0	63.3	-5.0	-8.1	0.2
PAPCO	54.0	80.0	51.5	-4.9	-16.9	0.0
WARBACAP	62.3	80.0	41.5	-4.9	27.1	0.3
HAYATCOMM	86.1	94.0	41.0	-4.3	53.8	9.6

Daily Volume Leaders

Stock (Fils)	Last Price	1D%	YTD%	Volume ('000)
BAREEQ	40.7	14.3	-38.3	40,961
AUB	245.0	1.2	7.9	30,212
MAZAYA	92.4	-0.5	62.1	25,955
GBK	238.0	-0.8	8.7	12,735
ARZAN	166.0	1.8	196.4	11,573

Daily Value Leaders

Stock (Fils)	Last Price	1D%	YTD%	Value (KD'000)
AUB	245.0	1.2	7.9	7,394
KFH	786.0	-0.3	16.1	3,659
NBK	887.0	0.2	5.6	3,082
GBK	238.0	-0.8	8.7	3,032
HUMANSOFT	3,570.0	-2.1	-6.0	2,641

Source: Boursa Kuwait (for all tables and charts on page 2)

Stocks Trading Near 52 Weeks High

Stock (Fils)	Last Price	52 W High	% Below 52 W High	Value (KD'000)
BOURSA	1,618.0	1,619.0	-0.1	480.2
AUB	245.0	247.0	-0.8	7,393.8
KFH	786.0	795.0	-1.1	3,658.5
NBK	887.0	898.0	-1.2	3,082.3
ALMUTAHED	301.0	305.0	-1.3	39.1

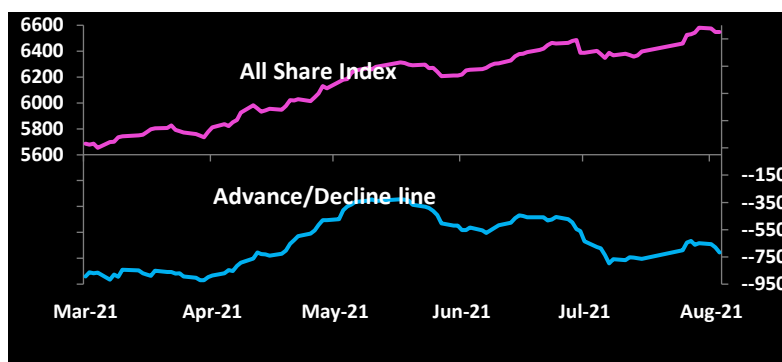
Stocks Trading Near 52 Weeks Low

Stock (Fils)	Last Price	52 W Low	% Above 52 W Low	Value (KD'000)
NAPESCO	865.0	855.0	1.2	18.7
AZNOULA	225.0	220.0	2.3	142.4
STC	860.0	822.0	4.6	115.6
PAPCO	54.0	51.5	4.9	0.0
YIACO	450.0	424.0	6.1	0.0

New High / Low

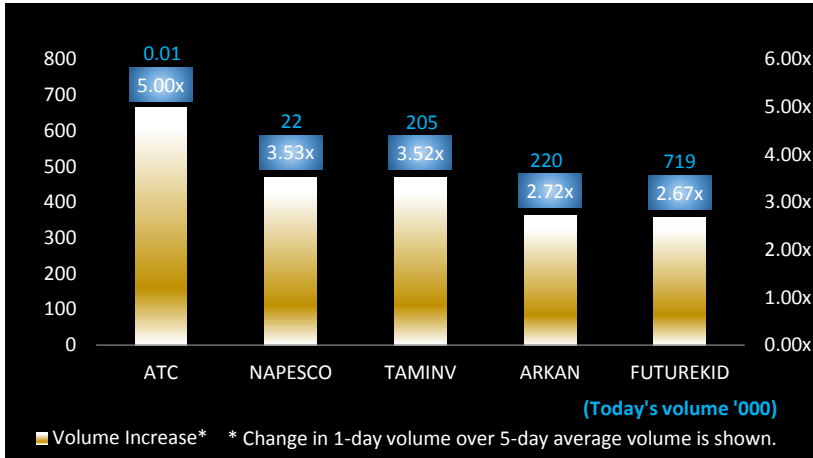
1D	1W
3	11
0	0

Market Breadth



Advancing Volume	124.0 Mln	Advancing Shares	52
Declining Volume	98.7 Mln	Declining Shares	66
Unchanged Volume	20.3 Mln	Unchanged Shares	21

Volume Trending Stocks

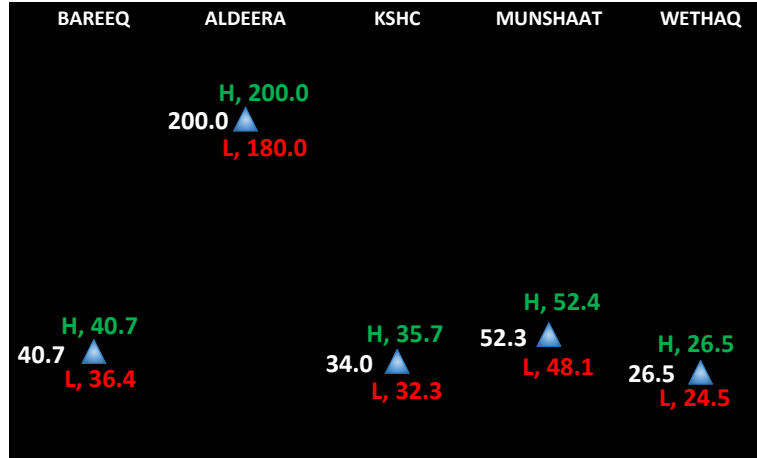


Sectoral Valuation Multiples

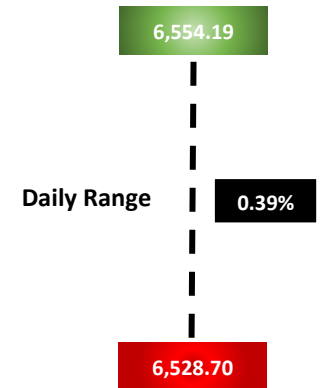
Sector/Indices	Market Cap (KD Mln)	Weight (%)	P/E (TTM)*#	P/BV (TTM)*
All Share Index	38,418.76	100.00%	23.0x	1.7x
Premier Market	29,097.91	75.74%	25.8x	2.1x
Main Market	9,320.85	24.26%	14.8x	1.0x
BANKS	22,005.57	57.28%	30.7x	2.1x
FINANCIAL SERVICES	3,489.53	9.08%	9.1x	1.1x
REAL ESTATE	2,545.51	6.63%	34.0x	1.0x
INSURANCE	504.32	1.31%	9.8x	1.0x
INDUSTRIALS	4,109.98	10.70%	23.8x	1.3x
BASIC MATERIALS	954.82	2.49%	26.0x	1.4x
CONSUMER STAPLES	232.13	0.60%	17.1x	1.5x
TELECOMMUNICATIONS	3,312.87	8.62%	15.1x	1.8x
ENERGY	295.28	0.77%	17.7x	1.1x
TECHNOLOGY	10.30	0.03%	24.1x	0.9x
HEALTH CARE	161.06	0.42%	34.6x	2.5x
CONSUMER DISCRETIONARY	549.88	1.43%	19.6x	1.6x
UTILITIES	247.50	0.64%	20.1x	3.5x

Source : Boursa Kuwait and KIC Research *Based on data as on TTM 31.3.2021 # Market cap weighted, excluding companies with negative earnings

Stocks with Highest Daily Price Range (Fils)



All Share Index



Source: Boursa Kuwait (for the 3 charts)

Sectoral Performance

Sectoral Indices	Last Price	1D%	WTD%	MTD%	YTD%	Advances / Declines Ratio	Volume Traded / 5-day Avg Vol
All Share Index	6,547.82	0.0	-0.5	-0.5	18.1	0.79	0.69
Premier Market	7,127.00	0.0	-0.5	-0.5	17.8	0.54	0.85
Main Market	5,413.44	0.1	-0.4	-0.4	18.9	0.85	0.63
BANKS	1,489.24	0.1	-0.8	-0.8	18.0	1.33	1.11
FINANCIAL SERVICES	1,225.44	0.0	0.7	0.7	31.8	1.40	0.72
REAL ESTATE	1,210.93	0.4	0.1	0.1	27.1	0.63	0.46
INSURANCE	1,406.00	-0.7	0.1	0.1	21.6	1.00	0.70
INDUSTRIALS	1,156.49	-0.6	-0.3	-0.3	29.8	0.43	0.57
BASIC MATERIALS	1,070.63	-0.3	-0.6	-0.6	19.1	2.00	1.10
CONSUMER STAPLES	761.88	-0.4	-1.2	-1.2	-6.9	0.00	1.06
TELECOMMUNICATIONS	1,080.43	-0.1	-0.9	-0.9	-2.0	0.50	0.35
ENERGY	1,417.24	-0.4	0.1	0.1	11.0	0.50	0.53
TECHNOLOGY	749.33	0.0	-1.0	-1.0	49.1	N/M	1.90
HEALTH CARE	800.47	0.0	0.0	0.0	-3.2	0.00	1.43
CONSUMER DISCRETIONARY	1,026.23	-0.2	-0.9	-0.9	37.5	0.80	0.55
UTILITIES	592.11	-0.9	-0.9	-0.9	-18.8	0.00	0.42

Source : Boursa Kuwait

Kuwait Investment Co. (K.S.C.P)

5th Floor, Souk Al-Manakh, Mubarak Al-Kabir Street, Sharq, Kuwait

P.O. Box 1005, Safat 13011, Kuwait

Tel: (+965) 1888852 (+965) 22967000

Email: research@kic.com.kw

Websites: www.kic.com.kw / www.kictrade.com



Disclaimer:

This document and material contained herewith have been produced, compiled, and issued by Kuwait Investment Company- KIC (K.S.C.P.). Kuwait Investment Company is a public shareholding company, incorporated and domiciled in the State of Kuwait, and is regulated by the Central Bank of Kuwait (CBK) and Capital Markets Authority (CMA) as an investment and finance company. The Company has obtained the information used in this document from sources it believes to be reliable, but the issuer does not guarantee, neither its accuracy nor completeness, nor provides an independent verification of the material contained therein. KIC may, from time to time to the extent permitted by law, participate or invest in other financing transactions with the issuers of the securities, perform services for or solicit business from such issuer and/or have a position or effect transactions in the securities or options thereof. KIC may, to extent permitted by the applicable Kuwaiti Law or other applicable laws and regulations, effect transactions in the securities before this material is published to recipients. The opinions and estimates expressed herein are those of the issuer and subject to change at any time without any prior notice. Accordingly, no representation or warranty, expressed or implied, is made as to and no reliance should be placed on the fairness, accuracy, completeness or correctness of the information and opinions contained in this document. KIC accepts no liability for any loss arising from the use of this document or its contents or otherwise arising in connection therewith. This document should not be relied upon or used in substitution for the exercise of sound judgment. KIC shall have no responsibility or liability whatsoever in respect of any inaccuracy in or omission from this or any other document prepared by KIC for, or sent by KIC to any entity, and any such entity shall be responsible for conducting its own scrutiny, investigation, and analysis of the information contained or referred to in this document and of evaluating the merits and risks involved in the securities forming the subject matter of this or other such document.

Opinions and estimates constitute KIC's judgment and are subject to change without prior notice. Past performance is not a reliable indicator of future results. This document does not constitute an offer or invitation to subscribe for or purchase any securities, and neither this document nor anything contained herein shall form the basis of any contract or commitment whatsoever. This document is not an offer to sell or a solicitation to buy any securities. It is being furnished to the reader solely for his/her information and may not be redistributed inside Kuwait or by any jurisdiction outside Kuwait where this action is restricted by law. Entities who receive this report should make themselves aware of and adhere to any such restrictions. By accepting receipt of this report, the reader agrees to be bound by the foregoing limitations.